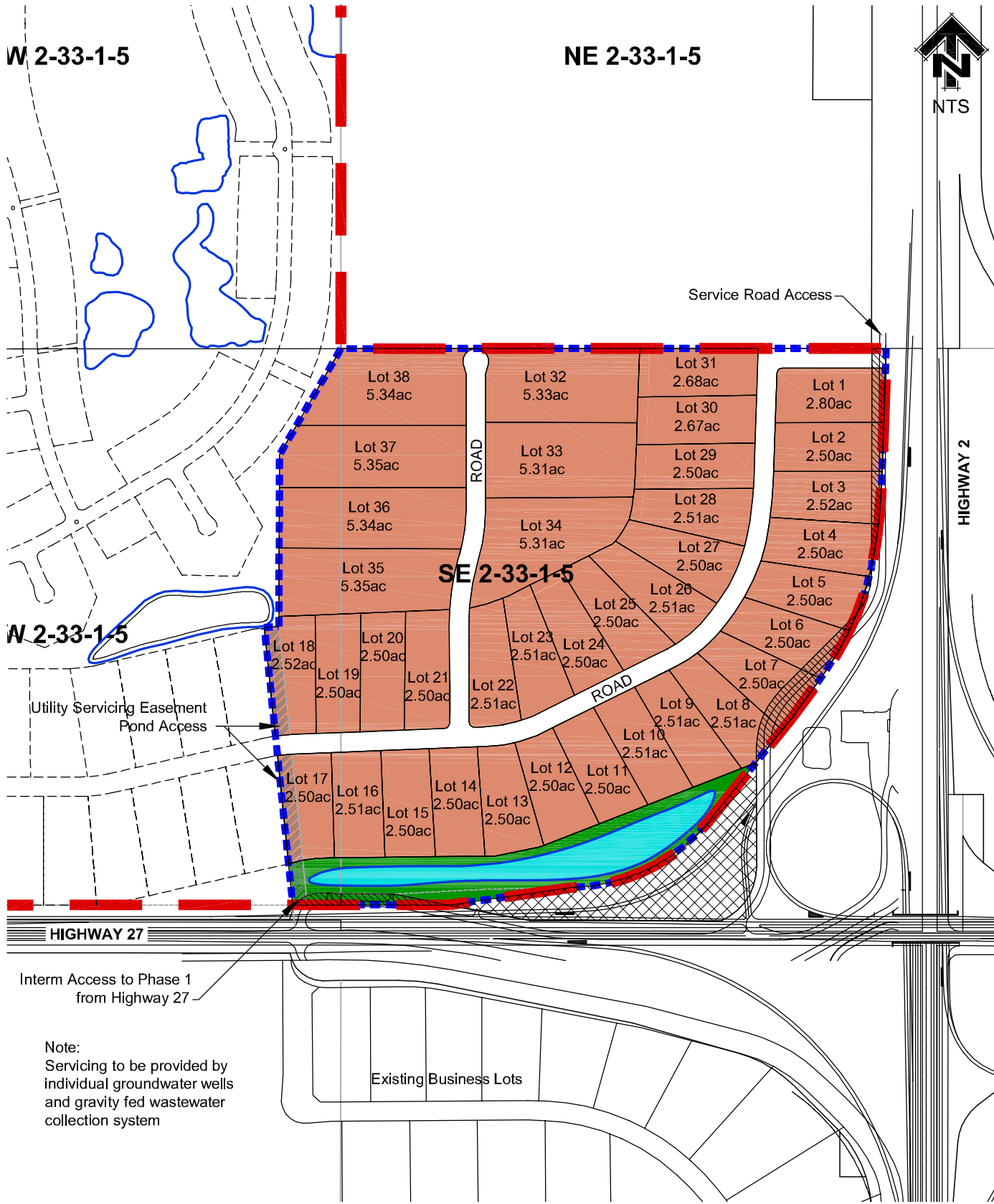


W 2-33-1-5

NE 2-33-1-5



W 2-33-1-5

SE 2-33-1-5

HIGHWAY 2

Utility Servicing Easement Pond Access

Service Road Access

HIGHWAY 27

Interm Access to Phase 1 from Highway 27




Existing Business Lots

Note:
Servicing to be provided by individual groundwater wells and gravity fed wastewater collection system

Legal Descriptions:

SE SEC 2-33-1-W5
Portion of SW SEC 2-33-1-W5
Within Mountain View County

Legend

-  Land Transfer to Province
-  Land Transfer to Developer
-  Phase 1 Boundary

**Tentative Plan
Phase 1 Business Park**